

FSP1566-6R-6100U

15" IP66 WATERPROOF STAINLESS STEEL PANEL PC

FEATURES

- 15" TFT LCD Panel PC with Resolution up to 1024 x 768
- IP66/NEMA4X Waterproof, Stainless Steel Housing
- Built-in Intel Core i3-6100U Processor
- Resistive Touch Screen
- 1000nits/1600nits High Brightness for Sunlight Readable (Option)



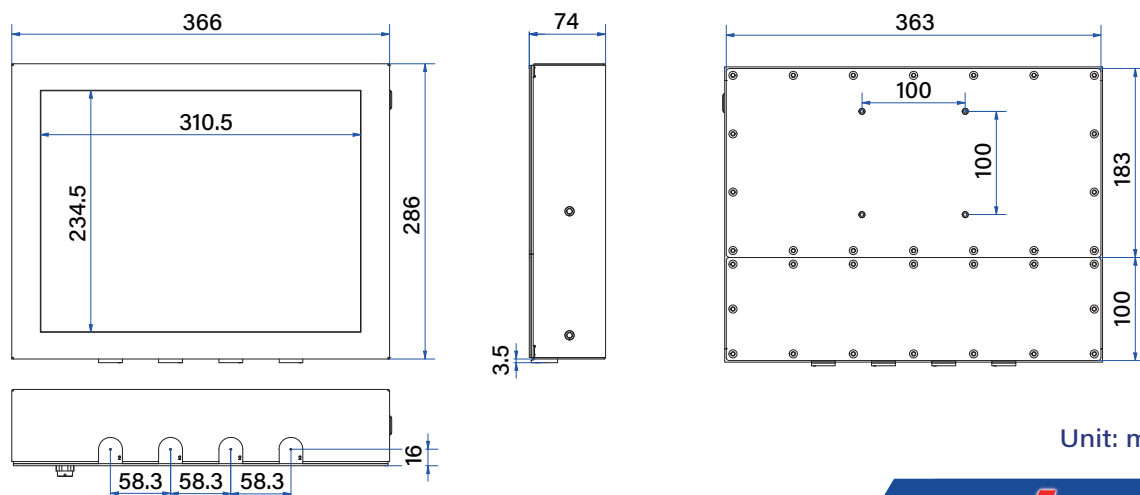
SPECIFICATION

Display	Size / Panel Type	15" TFT LCD Panel
	Resolution	1024 x 768
	Brightness	350 cd/m ² (Option : 1000 / 1600 cd/m ²)
	Contrast Ratio	800 : 1
	Response Time	8 ms
	Backlight	LED Backlight Unit
	Colors	16.2M Colors
	Viewing Angle	160° / 150°
Touch Screen	Touch Screen Type	Resistive Touch Screen
	Surface Hardness	3H
Environment	Operating Temperature	0°~+50°C
	Storage Temperature	-20°~+60°C
	Humidity	10%~90% RH (Non-Condensing)
	Waterproof Rating	IP66/NEMA4X , 6 Side Waterproof
System	Processor	Intel Core i3-6100U
	Memory (Option)	2 x DDR4 260-pin SO-DIMM 2133MHz, Up to 32GB
	Storage (Option)	1 x M.2 B-Key 2242/2280 (SATA) SSD
	I/O Interface	USB3.0 x 4, LAN x 2, HDMI x 1, DisplayPort x 2, Mic-in x 1, Line-out x 1, DC in w/2pin Terminal Block
	Power Input	12~24VDC Input w/AC100~240V Power Adapter
	Power Consumption	35W
	Mounting	VESA 100 x 100 mm
Dimension / Weight	366mm (W) x 286mm (H) x 74mm (D)/7.5kgs	

Specifications subject to change without notice

ACCESSORIES

- AC/DC Power Adapter x 1



Unit: mm